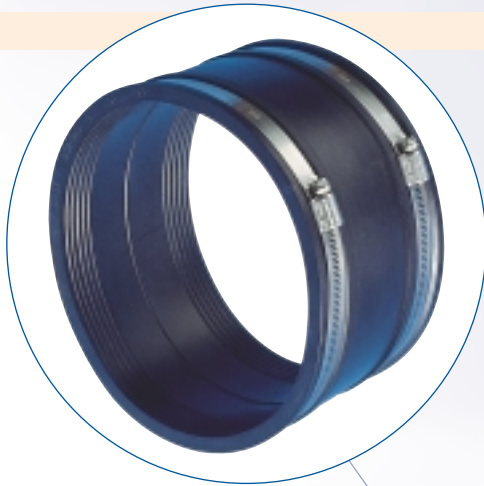


### ● Flex-Seal Products

## ● Drain Couplings (50-275mm diameter)

**Drain Pipe Connection and Repair** - Designed for drain construction where resistance to earth loads normally provided by Standard Couplings is not required



### Introduction

Flex-Seal Drain Couplings are used to connect, repair and maintain drainage systems and other small diameter non-pressure pipelines.

Available to suit any pipe material up to 275mm outside diameter, Drain Couplings are designed for use in drainage systems where the resistance to earth loads (usually provided by a Standard Coupling) is not required.

Flex-Seal Drain Couplings comprise a moulded elastomeric sleeve which is attached using medium duty stainless steel clamping bands at either end.

Flex-Seal can also supply Drain Couplings with nitrile sleeves (See sheet 31).



### Benefits

- **Low cost solution to damaged drainage systems**
- **Easy to install as it simply slides on to the damaged pipe**
- **Efficient and watertight solution**

### Applications

- Can be used to connect plain ended pipes
- Repair of existing pipe systems by replacing short sections
- Connects short and cut lengths of pipe
- Can be used as an adaptor between pipes of different materials and similar sizes (when used with a Flex-Seal Bush)

## Product Information

Reference No.	Size (mm)	Width (mm)	'T' (mm)
DC 65	50 - 65	90	7
DC 95	80 - 95	100	7
DC115	100 - 115	100	7
DC125	110 - 125	100	7
DC135	120 - 135	120	7
DC150	135 - 150	120	7
DC165	150 - 165	120	7
DC175	160 - 175	120	7
DC185	170 - 185	120	7
DC195	180 - 195	120	7
DC215	200 - 215	150	7
DC225	210 - 225	150	7
DC250	235 - 250	150	7
DC275	260 - 275	150	7

Also available in nitrile rubber

### Cross Section of Coupling



## Application

<b>DC65</b>		50mm (2") POLYPROPYLENE 50mm (2") ABS 50mm (2") CAST IRON (SOIL)
<b>DC95</b>		82mm (3") PVCu 75mm CAST IRON (SOIL & DRAIN) (SMU) 75mm DUCTILE IRON 75mm GREY IRON
<b>DC115</b>		110mm PVCu 100mm CAST IRON (SOIL) (SMU/ENSIGN/SML) 100mm STAINLESS STEEL 100mm CORRUGATED PLASTIC 110mm CORRUGATED PLASTIC
<b>DC125</b>		100mm SUPERSLEVE 100mm CAST IRON (DRAIN) 100mm DUCTILE IRON 100mm GREY IRON 100mm ASBESTOS CEMENT 100mm PITCH FIBRE 100mm TWIN WALLED PLASTIC
<b>DC135</b>		100mm SUPERSLEVE 100mm (4") SALT GLAZED WARE 100mm VITRIFIED CLAY 100mm PITCH FIBRE 100mm ASBESTOS CEMENT
<b>DC150</b>		125mm CAST IRON (SOIL) 125mm TWIN WALLED PLASTIC
<b>DC165</b>		160mm PVCu 150mm CAST IRON (SMU/ENSIGN/SML) 150mm STAINLESS STEEL 160mm POLYETHYLENE
<b>DC175</b>		150mm ULTRA-RIB 150mm QUANTUM 150mm DUCTILE IRON 150mm GREY IRON 150mm TWIN WALLED PLASTIC (MAVIN/NORFLEX) 150mm CORRUGATED PLASTIC (MAVIN / AQUARPE)
<b>DC185</b>		150mm SUPERSLEVE 150mm PITCH FIBRE 150mm ASBESTOS CEMENT 150mm TWIN WALLED PLASTIC (B&H/LINFLEX/AQUARPE) 150mm CORRUGATED PLASTIC (B&H)
<b>DC195</b>		150mm SUPERSLEVE 150mm (6") SALT GLAZED WARE 150mm VITRIFIED CLAY 150mm CONCRETE 150mm ASBESTOS CEMENT 150mm PITCH FIBRE



## Global Solutions for Pipe Connection and Repair

Endeavour Works, Newlands Way, Valley Park, Wombwell, Barnsley S73 0UW, England

General Tel: +44 (0) 1226 340 222 Fax: +44 (0) 1226 340 400

E-mail: [sales@flexseal.co.uk](mailto:sales@flexseal.co.uk) Web Site: [www.flexseal.co.uk](http://www.flexseal.co.uk)