



Lindab Rainline™
the STEEL rainwater system
with the low CO₂ footprint



www.lindab.co.uk

This is Lindab

With over 51 years of experience in the development, manufacturing and marketing of sheet-metal products, Lindab has become one of the leading international players in the construction and HVAC industries.



In 1957, Lindab started out as a small sheet-metal shop in Lidhult, Sweden, and the year after Lindab moved to Båstad, on the Bjäre Peninsula in the south west of Sweden, where Lindab is situated today.

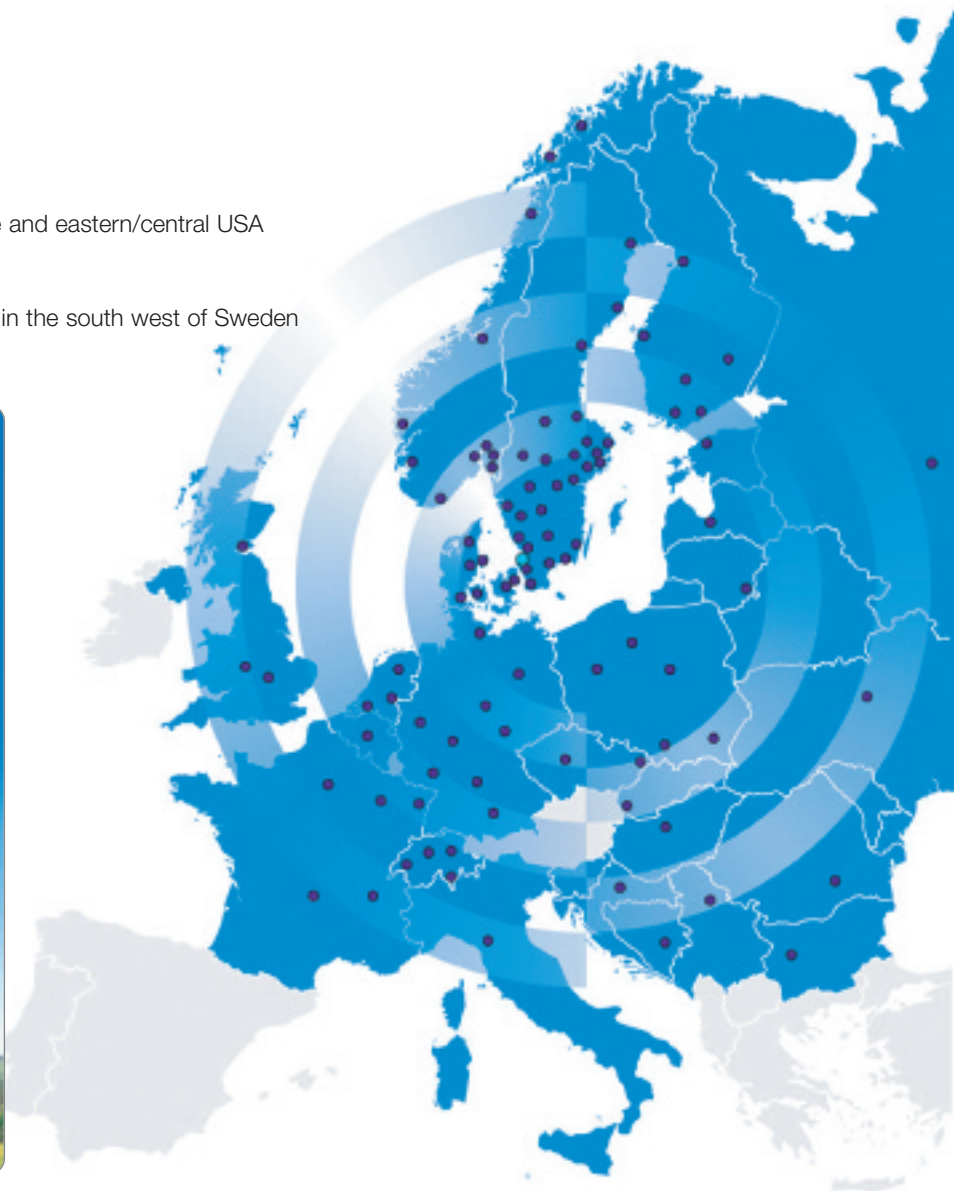
Lindab has since then expanded to a worldwide business with representation in 31 countries.

Lindab's market presence

- 128 locations in 31 countries
- Local production units in 18 countries
- Over 1,000 Lindab distributors cover Europe and eastern/central USA
- Employs over 5,000 people
- Head Office on the beautiful Bjäre Peninsula in the south west of Sweden

IT COMES NATURALLY

Lindab's business is based on long-term sustainable and environmentally friendly systems in steel and sheet metal. We focus on minimizing the use of raw materials, components, energy, packaging and transport. Today 90 per cent of our operations are certified according to ISO 14001. A full environmental declaration is available on request.



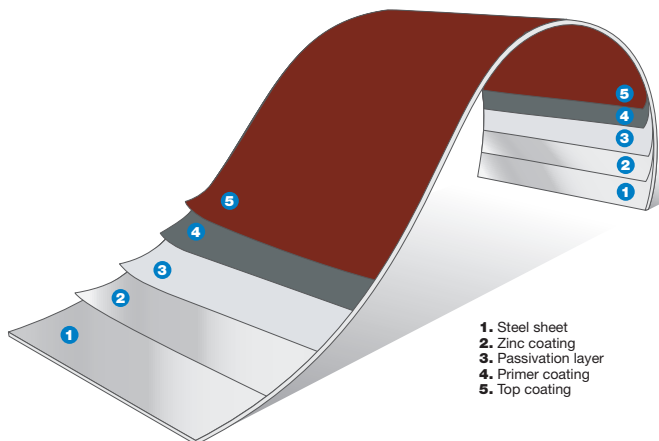
The greenest quality system

Lindab Rainline is the rain drainage system that offers the highest quality, with the lowest CO₂ footprint of any other system.

Rainline has been developed by professionals to combine durability, flexibility and ease of installation – and with steel's low cradle-to-grave CO₂ impact, it promises decades of performance.



A policy of continual research and development has made Rainline steel systems the top choice of tradesmen and DIY enthusiasts alike, with customer feedback ensuring that the Rainline system reflects the needs of the specifier, installer and end-user.



1. Steel sheet
2. Zinc coating
3. Passivation layer
4. Primer coating
5. Top coating

Features and Benefits of Lindab Rainline

Made to last with the lowest cradle-to-grave impact

Steel is the ultimate material for roof-drainage systems. It is much lighter than cast iron, is easier to handle than aluminium and offers minimal thermal movement compared to plastic (which can move and crack causing leaks). Steel also has the lowest CO₂ impact of any competitor.

Simplified construction

No specialist tools or skills are required; gutters and downpipes simply push together without the need for any sealants.

Stylish design for a variety of buildings

Designed for large or small, classic or contemporary.

Low maintenance

The only maintenance required is an occasional wipe or wash down. Easy assembly and installation guarantee a long service life.

Vandal resistant

Highly resistant to attack from vandals - can be fixed flush to a wall to prevent anyone climbing up the downpipe.

Colour choice

Available in a choice of 10 standard colours (high-build polyester paint finishes) as well as plain galvanized and Aluzinc-coated finishes. Coated finishes are UV stable - will not fade or crack.

15-year guarantee

Lindab Rainline coated products all come with a standard 15-year guarantee and a further 5 years on the aluzinc range. The guarantee covers the whole system including the integrity of the steel itself.

Minimum environmental impact

Tests have proven that Rainline steel systems reflect the lowest cradle-to-grave impact by minimizing the use of raw materials, components, energy, packaging and transport.

Cost-effective solution

Competitively priced against leading plastic systems and inexpensive compared with aluminium and cast iron.

Choosing the right rainwater system has never been easier



Smart bracket

This bracket can be adjusted to match any fascia board angle. Strong and extremely easy to fit.



Stop ends

These ends are self-sealing with an EPDM tube. They are non-handed, easily fitted with a single firm tap from a soft hammer.



Pipe holder

This holder is made from one piece of sheet steel, and mounts a pipe with one firm click and fixes with two screws.



Gutter joint

These joints are easy to fit, creating a very firm and durable joint. The joints are guaranteed leak-proof with a long-lasting EPDM seal.

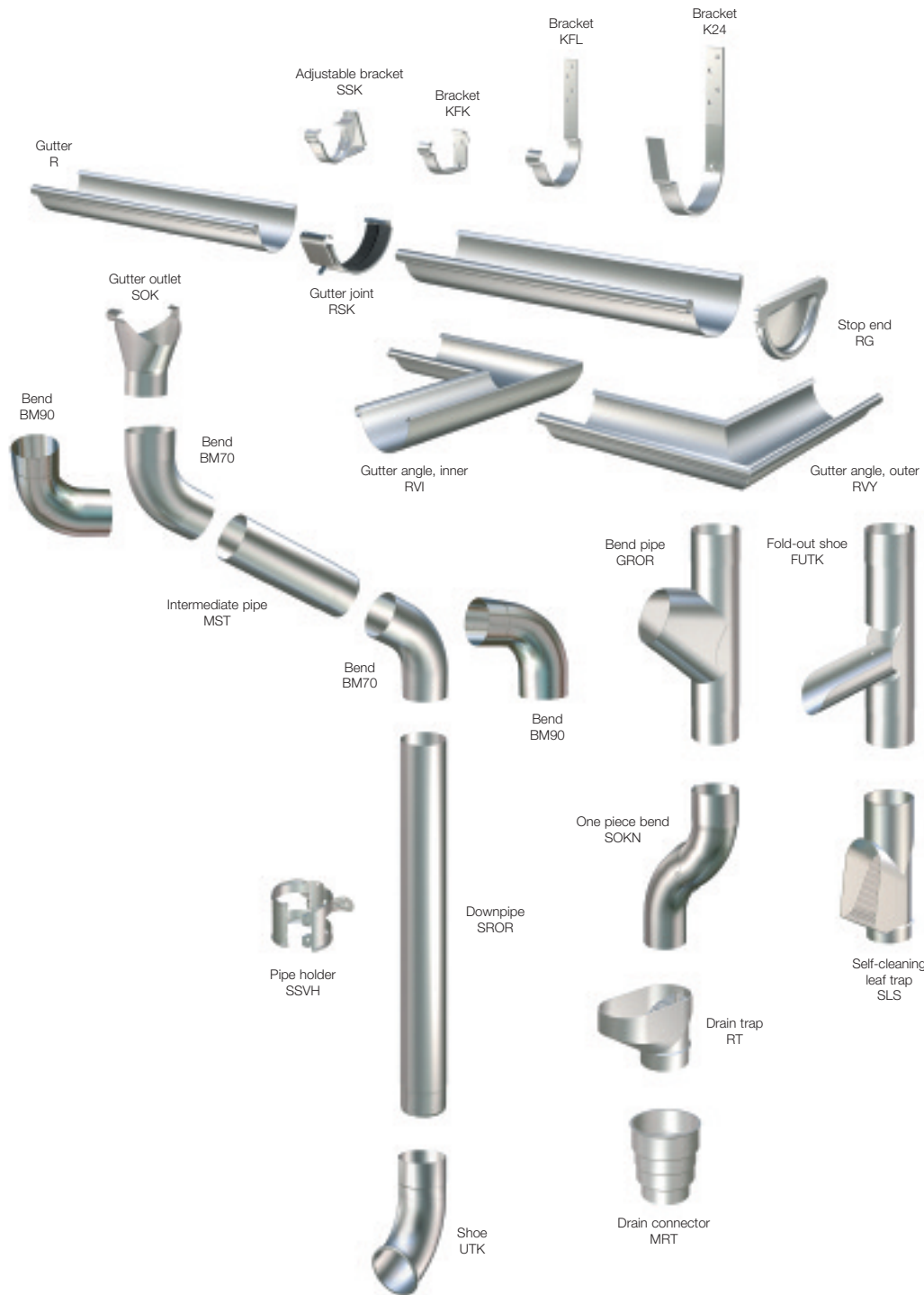


Outlet

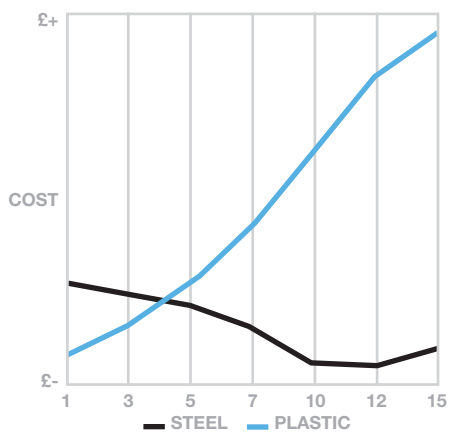
This versatile gutter outlet has a one-grip snap-on mounting that ensures a perfect fit to the semi-circular shape of the gutter. A minimum of a 2-inch diameter hole needs to be drilled or cut out of the gutter before the outlet is assembled.

Extra durable high-build polyester paint finishes

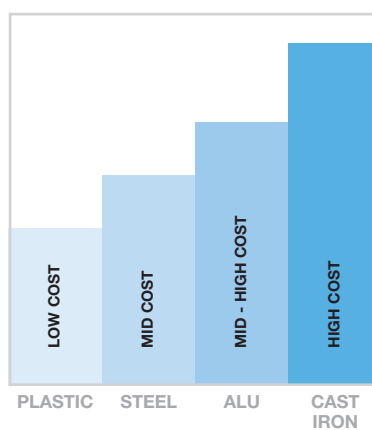
| | |
|--|---|
| Antique White RAL 9002 |  |
| Black RAL 9005 |  |
| Silver Metallic RAL 9006 |  |
| Brown RAL 8017 |  |
| Dark Grey RAL 7011 |  |
| Copper Metallic RAL 8003 |  |
| Tile Red RAL 8004 |  |
| Dark Red RAL 3009 |  |
| Anthracite Metallic RAL 7037 |  |
| Pine Green RAL 6020 |  |



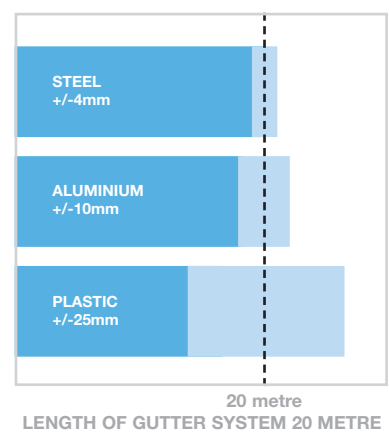
MAINTENANCE LIFE CYCLE



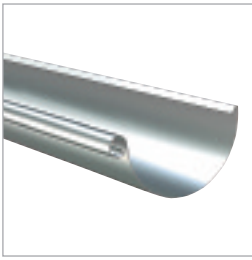
£ PRICE POSITIONING



EXPANSION -5°C to +30°C

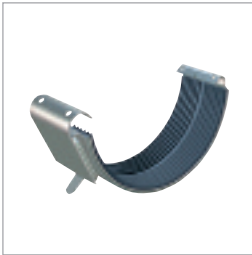
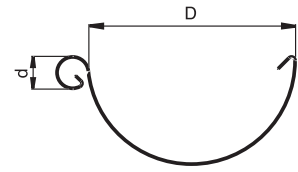


Technical Facts **Half Round Gutter & Accessories**



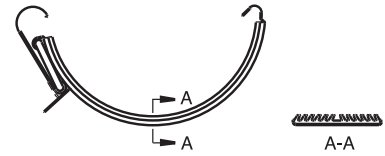
R Half Round Gutter. Standard Length 3m

| Size mm | D mm | d mm | Galv | Coated | Aluzinc |
|---------|------|------|------|--------|---------|
| R100-3m | 107 | 17 | ✓ | ✓ | N/A |
| R125-3m | 123 | 17 | ✓ | ✓ | ✓ |
| R150-3m | 155 | 17 | ✓ | ✓ | ✓ |
| R190-3m | 192 | 22 | ✓ | ✓ | N/A |



RSK Gutter Joint with EPDM Rubber Seal

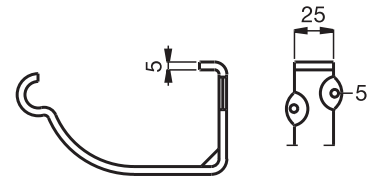
| Size mm | Galv | Coated | Aluzinc |
|---------|------|--------|---------|
| RSK-100 | ✓ | ✓ | N/A |
| RSK-125 | ✓ | ✓ | ✓ |
| RSK-150 | ✓ | ✓ | ✓ |



KFK Fascia Bracket

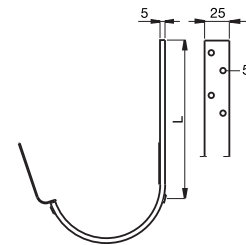
| Size mm | Galv | Coated | Aluzinc |
|---------|------|--------|---------|
| KFK-100 | ✓ | ✓ | N/A |
| KFK-125 | ✓ | ✓ | N/A* |
| KFK-150 | ✓ | ✓ | N/A* |

*Order in silver metallic.



K24 Fascia Bracket

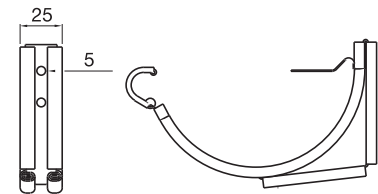
| Size mm | L mm | Galv | Coated | Aluzinc |
|---------|------|------|--------|---------|
| K24-190 | 107 | ✓ | ✓ | N/A |



SSK Adjustable Snap-On Bracket

| Size mm | Galv | Coated | Aluzinc |
|---------|------|--------|---------|
| SSK-100 | N/A* | ✓ | N/A |
| SSK-125 | N/A* | ✓ | N/A* |
| SSK-150 | N/A* | ✓ | N/A* |

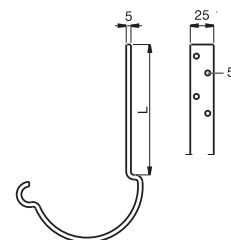
*Order in silver metallic.



KFL Rafter Bracket*

| Size mm | L mm | Galv | Coated | Aluzinc |
|---------|------|------|--------|---------|
| KFL-100 | 196 | ✓ | ✓ | N/A |
| KFL-125 | 196 | ✓ | ✓ | N/A* |
| KFL-150 | 196 | ✓ | ✓ | N/A* |

*Order in silver metallic.

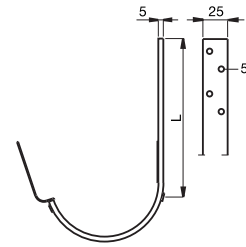


Technical Facts **Half Round Gutter & Accessories**



K33 Rafter Bracket

| Size mm | L mm | Galv | Coated | Aluzinc |
|---------|------|------|--------|---------|
| K33-190 | 337 | ✓ | ✓ | N/A |



RFKF Rise and Fall Bracket

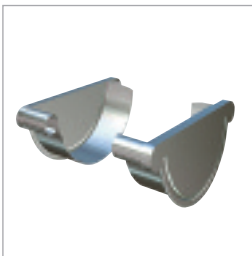
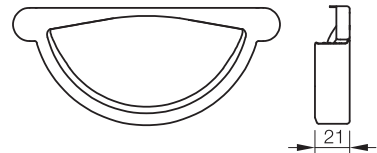
| Size mm | Thread mm | Spike mm | Galv | Coated | Aluzinc |
|----------|-----------|----------|------|--------|---------|
| RFKF-100 | 250 | 300 | ✓ | ✓ | N/A |
| RFKF-125 | 250 | 300 | ✓ | ✓ | N/A* |
| RFKF-150 | 250 | 300 | ✓ | ✓ | N/A* |

*Order in silver metallic.



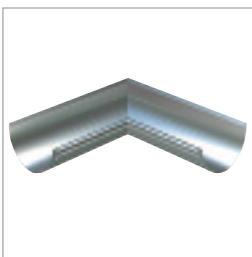
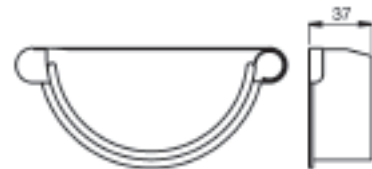
RG Stop End, Self-Locking (Non-Handed) with EPDM Rubber Seal

| Size mm | Galv | Coated | Aluzinc |
|---------|------|--------|---------|
| RG-100 | ✓ | ✓ | N/A |
| RG-125 | ✓ | ✓ | ✓ |
| RG-150 | ✓ | ✓ | ✓ |



RGV/RGH Stop End (Left/Right Handed)

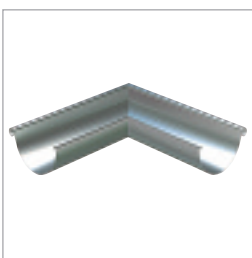
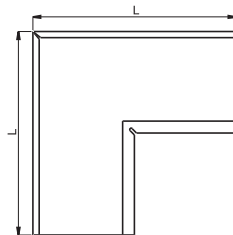
| Size mm | Galv | Coated | Aluzinc |
|-----------|------|--------|---------|
| RGV/H-190 | ✓ | ✓ | N/A |



RVI 90° Gutter Angle: Inner

| Size mm | L mm | Galv | Coated | Aluzinc |
|---------|------|------|--------|---------|
| RVI-100 | 400 | ✓ | ✓ | N/A |
| RVI-125 | 300 | ✓ | ✓ | ✓ |
| RVI-150 | 300 | ✓ | ✓ | ✓ |
| RVI-190 | 500 | ✓ | ✓ | N/A |

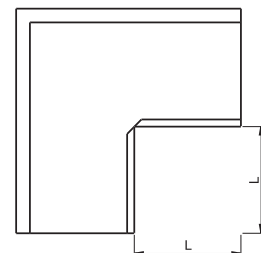
*135° angle 50% extra / special angles 100% extra. 2 jointers required per angle.



RVY 90° Gutter Angle: Outer

| Size mm | L mm | Galv | Coated | Aluzinc |
|---------|------|------|--------|---------|
| RVY-100 | 295 | ✓ | ✓ | N/A |
| RVY-125 | 160 | ✓ | ✓ | ✓ |
| RVY-150 | 130 | ✓ | ✓ | ✓ |
| RVY-190 | 285 | ✓ | ✓ | N/A |

*135° angle 50% extra / special angles 100% extra. 2 jointers required per angle.

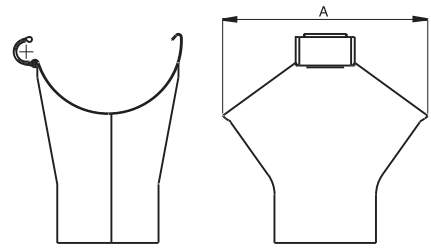


Technical Facts **Half Round Gutter & Accessories**



SOK Gutter Outlet

| Size mm | A mm | Galv | Coated | Aluzinc |
|---------|------|------|--------|---------|
| SOK-100 | 151 | ✓ | ✓ | N/A |
| SOK-125 | 174 | ✓ | ✓ | ✓ |
| SOK-150 | 207 | ✓ | ✓ | ✓ |
| SOK-190 | 180 | ✓ | ✓ | N/A |

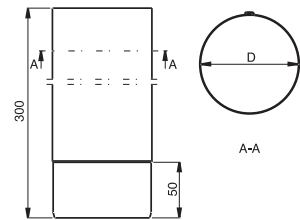


Technical Facts **Down Pipe & Accessories**



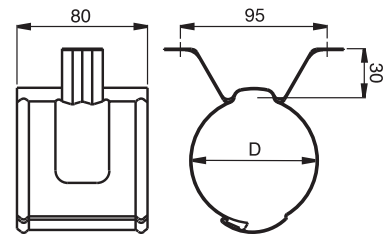
SROR Down Pipe: Standard Length 3m

| Size mm | Galv | Coated | Aluzinc |
|----------|------|--------|---------|
| SROR-75 | ✓ | ✓ | ✓ |
| SROR-87 | ✓ | ✓ | ✓ |
| SROR-100 | ✓ | ✓ | ✓ |
| SROR-120 | ✓ | ✓ | N/A |



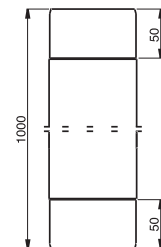
SSVH Down Pipe Bracket

| Size mm | Galv | Coated | Aluzinc |
|----------|------|--------|---------|
| SSVH-75 | ✓ | ✓ | ✓ |
| SSVH-87 | ✓ | ✓ | ✓ |
| SSVH-100 | ✓ | ✓ | ✓ |
| SSVH-120 | ✓ | ✓ | N/A |



MST Intermediate Pipe x 1m

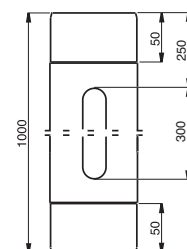
| Size mm | Galv | Coated | Aluzinc |
|---------|------|--------|---------|
| MST-75 | ✓ | ✓ | ✓ |
| MST-87 | ✓ | ✓ | ✓ |
| MST-100 | ✓ | ✓ | ✓ |
| MST-120 | ✓ | ✓ | N/A |



MSTR Rod Access Pipe x 1m

| Size mm | Galv | Coated | Aluzinc |
|----------|------|--------|---------|
| MSTR-75 | ✓ | ✓ | ✓ |
| MSTR-87 | ✓ | ✓ | ✓ |
| MSTR-100 | ✓ | ✓ | ✓ |
| MSTR-120 | ✓ | ✓ | N/A |

Inspection door available in plain Galv as standard. Can be colour matched at extra cost.

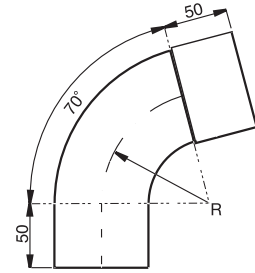


Technical Facts **Down Pipe & Accessories**



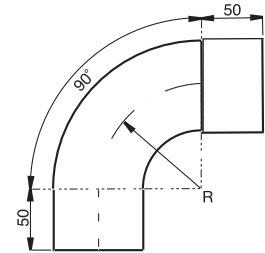
BM 70° Pipe Bend (2 bends per offset required)

| Size mm | R mm | Galv | Coated | Aluzinc |
|----------|------|------|--------|---------|
| BM70-75 | 90 | ✓ | ✓ | ✓ |
| BM70-87 | 100 | ✓ | ✓ | ✓ |
| BM70-100 | 125 | ✓ | ✓ | ✓ |
| BM70-120 | 125 | ✓ | ✓ | ✓ |



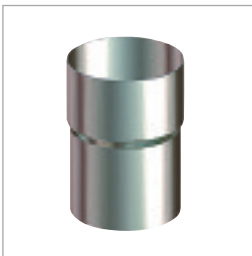
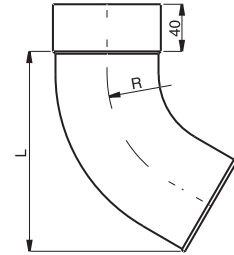
BM 90° Pipe Bend (2 bends per offset required)

| Size mm | R mm | Galv | Coated | Aluzinc |
|----------|------|------|--------|---------|
| BM90-75 | 90 | ✓ | ✓ | ✓ |
| BM90-87 | 100 | ✓ | ✓ | ✓ |
| BM90-100 | 125 | ✓ | ✓ | ✓ |



UTK Pipe Shoe

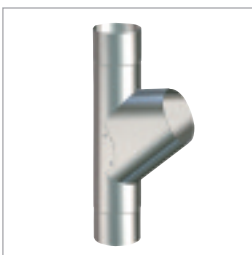
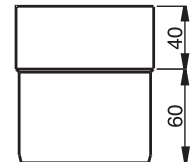
| Size mm | R mm | L mm | Galv | Coated | Aluzinc |
|---------|------|------|------|--------|---------|
| UTK-75 | 105 | 165 | ✓ | ✓ | ✓ |
| UTK-87 | 105 | 170 | ✓ | ✓ | ✓ |
| UTK-100 | 105 | 175 | ✓ | ✓ | ✓ |
| UTK-120 | 125 | 205 | ✓ | ✓ | N/A |



SRORM Pipe Connector

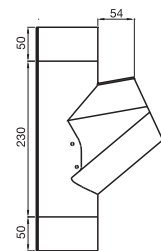
| Size mm | Galv | Coated | Aluzinc |
|-----------|------|--------|---------|
| SRORM-75 | ✓ | ✓ | N/A* |
| SRORM-87 | ✓ | ✓ | N/A* |
| SRORM-100 | ✓ | ✓ | N/A* |

*Order in silver metallic.



GROR Branch

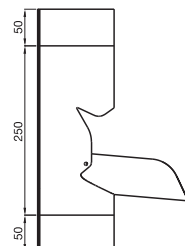
| Size mm | Galv | Coated | Aluzinc |
|----------|------|--------|---------|
| GROR-75 | ✓ | ✓ | ✓ |
| GROR-87 | ✓ | ✓ | ✓ |
| GROR-100 | ✓ | ✓ | ✓ |



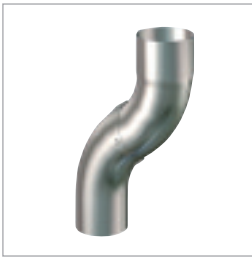
FUTK Adjustable Shoe (manual)

| Size mm | Galv | Coated | Aluzinc |
|----------|------|--------|---------|
| FUTK-75 | ✓ | ✓ | ✓ |
| FUTK-87 | ✓ | ✓ | ✓ |
| FUTK-100 | ✓ | ✓ | ✓ |

Conventional rainwater filter and diverter available in plastic, see top of page 11.

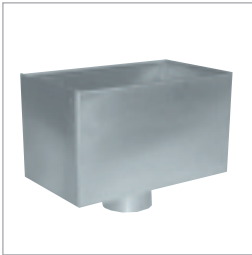
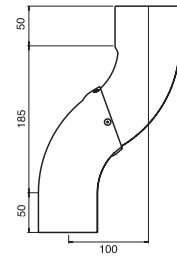


Technical Facts **Down Pipe & Accessories**



SOKN One Piece Bend

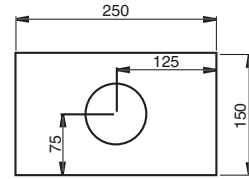
| Size mm | Galv | Coated | Aluzinc |
|----------|------|--------|---------|
| SOKN-75 | ✓ | ✓ | ✓ |
| SOKN-87 | ✓ | ✓ | ✓ |
| SOKN-100 | ✓ | ✓ | ✓ |



VATK-R Small Rectangular Water Hopper

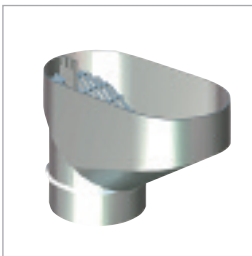
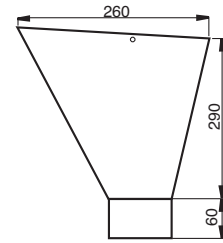
| Size mm | Galv | Coated | Aluzinc |
|-----------|------|--------|---------|
| VATKR-75 | ✓ | ✓ | N/A |
| VATKR-87 | ✓ | ✓ | N/A |
| VATKR-100 | ✓ | ✓ | N/A |
| VATKR-120 | ✓ | ✓ | N/A |

Only available in selected colours.



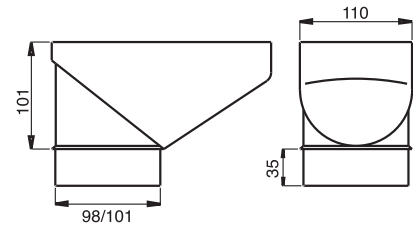
VATK-L Large Square Water Hopper

| Size mm | Galv | Coated | Aluzinc |
|-----------|------|--------|---------|
| VATKL-75 | ✓ | ✓ | ✓ |
| VATKL-87 | ✓ | ✓ | ✓ |
| VATKL-100 | ✓ | ✓ | ✓ |
| VATKL-120 | ✓ | ✓ | ✓ |



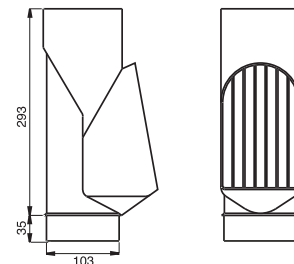
RT Drain Trap for Down Pipes (HD polythene)

Leaf strainer. The lower section fits standard ground pipes/junction pipes.



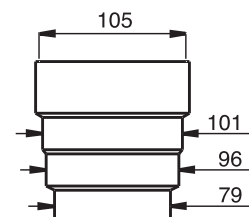
SLS Self-Cleaning Leaf Trap (HD polythene)

Self-cleaning leaf strainer. The lower section fits standard ground pipes/junction pipes.



MRT Drainage Connector (HD polythene)

Drainage adapter. For connection to ground pipes with other dimensions than standard.



Technical Facts **Down Pipe & Accessories**



Rain Water Diverter

| Size mm | Material | Colours |
|----------------------------|----------|---------------|
| Suits pipe dia 75mm & 87mm | Plastic | Black & White |

Fixing Screws (50 per bag)

| Colour | Size |
|------------------|--------------|
| Galv finish only | 4.8mm x 25mm |

Touch-Up Paint

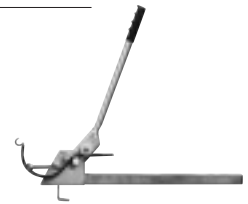
| Description |
|----------------------------------|
| STIFT Touch-up paint .0121 litre |
| BF-250 Touch-up paint .250 litre |

Gutter Leaf Guard - Length 10M (HD polythene)

| Description |
|---------------------------------------|
| Gutter Leaf Guard (23 clips included) |
| Additional clips can be ordered |

KBO Bracket Bender

| Description |
|----------------|
| Bracket Bender |



Lindab Rainline™ – the high-performance STEEL rainwater system



Westlea Housing Association
 Architect: *In-House*
 Project Location: *Groundwell, Swindon*



Daymer Bay Company
 Architect: *Harrison Sutton*
 Project Location: *Medrose, Rock, Cornwall*



Totty Construction
 Architect: *AFL Architects, Manchester*
 Project Location: *Wilmslow, Cheshire*

Loved by builders, appreciated by planners and wanted by clients



Devon & Cornwall Housing Association
 Architect: *Gale & Snowden*
 Project Location: *Oak Meadow, South Molton*



Duke of Somerset Estates
 Architect: *Harrison Sutton*
 Project Location: *Waterside Offices, Totnes*



Gerald Wood Homes (Midas)
 Architect: *Heighway Field Associates*
 Project Location: *Berry Pomeroy*



We are always close at hand to give you advice and assistance

At Lindab Building Products, our aim is to match the reliability of our products with that of our service. Customer support is a core part of our business philosophy.

We are proud of the relationships we have developed with local authorities, housing associations, exclusive developers, contractors and end-users across the UK. We have only done this by adopting the right approach to both customers and end-users, and a focus on delivering products with a low CO₂ impact.



Office support

We have dedicated customer support at our UK Head Office in the Midlands which can provide you with technical assistance, quotes, order entry and problem-solving solutions just by picking up the phone. Send us your building drawings and we will even do a "product take-off" for you free of charge.

Field Support

We have a dedicated team of Area Managers who have been trained to the highest degree on our Rainwater System. Our team is available to visit you either on site or in your office/premises. We will give you full technical support on site and work closely with your designated contractor. Our team can also offer product demonstrations / seminars / CPDs at your place of work to enable you to make the right choice.

Distribution

We can normally deliver standard items to you within 3-5 working days. Deliveries are made directly from our distribution centre in the Midlands. We also have a database of approved distributors across the UK which can help you with orders, quotes and arranging visits from our Area Managers.

For more information about our product range or to find your nearest stockist, please do not hesitate to contact us.



**Lindab Ltd
Building Products Division**
Shenstone Trading Estate
Bromsgrove Road
Halesowen
West Midlands
B63 3XB

Tel: (0121) 585 2780
Fax: (0121) 585 2782
Email: buildingproducts.sales@lindab.co.uk
Web: www.lindab.co.uk



www.lindab.co.uk

© 2010 Lindab AB. Lindab is a registered trademark of Lindab AB, as are the designation of our product ranges. Lindab AB reserves the right to make alterations without prior notice.

Whilst every care has been taken in the preparation of this brochure, some changes may have occurred since publication. Lindab AB is not responsible for omissions or typographical errors.